

Luminaire **Specification**

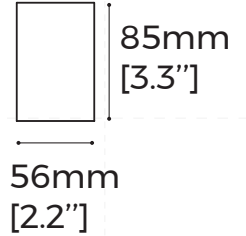
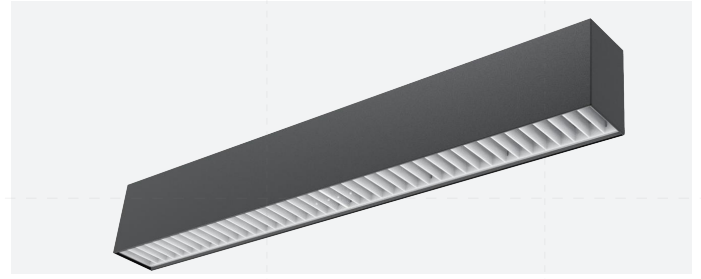
# LH60BD

— LINE 60 series



## 【Basic Parameters】

- Material: AL6063-T5, spraying surface
- Coating: Black (RAL9005), White (RAL9003), Champagne Gold, Rose Gold, Matt Green(RAL6019), Matt Orange(RAL2008)
- Lighting direction: upward & downward
- Light efficiency: 80 LM/W
- UGR: ≤ 19 (X=4H, Y=8H)
- Dimming method: Non/ DALI-2+PUSH/1-10V optional
- Length: 1200mm/1800mm/2400mm optional, customizable
- SDCM≤3 (ANSI)
- CRI: 80/90
- CCT: 2700/3000/3500/4000/5000/6500/3000-6500K optional
- Input voltage: AC220-240V
- Application: Indoor
- Installation method: Pendant
- IP grade: IP20
- Certification: CE, CB, UKCA, SAA, ROHS, Reach
- Warranty: 5 years(Emergency power model:3 years)



## 【Luminaire Parameters】

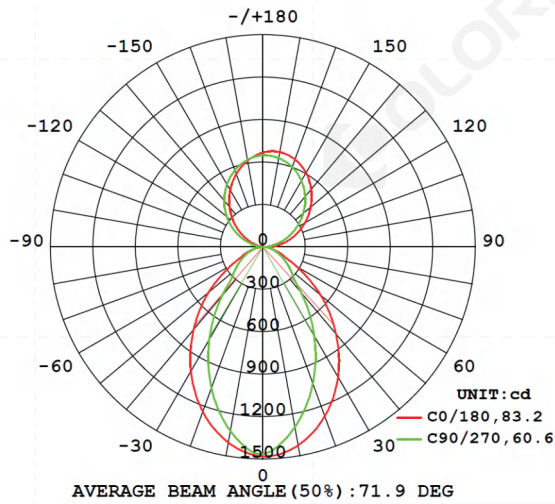
Model	CCT	CRI	Input Voltage (V)	Max. Current (A)	Type Power (W)	Max. Power (W)	Lumen (LM)	Length	Note		
LLS-LH60BDFBS1200(N) LLS-LH60BDFBS1200(E)	2700K	>80	220VAC- 240VAC	1.3 (0.33A/ft)	51 (12.94W/ft)	51 (12.94W/ft)	3800 (965LM/ft)	1200mm (3.94ft)	Single CCT control/ Emergency power models		
	3000K						3880 (985LM/ft)				
	3500K						3960 (1005LM/ft)				
	4000K						4080 (1035LM/ft)				
	5000K						4080 (1035LM/ft)				
	6500K						4080 (1035LM/ft)				
	2700K	>90					3230 (820LM/ft)				
	3000K						3300 (840LM/ft)				
	3500K						3370 (850LM/ft)				
	4000K						3470 (880LM/ft)				
	5000K						3470 (880LM/ft)				
	6500K						3470 (880LM/ft)				
	LLS-LH60BDFBS1200(T)						3000K			>80	2650 (670LM/ft)
							4300K				3060 (780LM/ft)
6500K		2800 (710LM/ft)									
3000K		>90	2200 (560LM/ft)								
4300K			2600 (660LM/ft)								
6500K			2380 (605LM/ft)								

LLS-LH60BDFBS1800(N)	2700K	>80	220VAC- 240VAC	2 (1.35A/ft)	78 (13.2W/ft)	80 (13.5W/ft)	5800 (980LM/ft)	1800mm (5.91ft)	Single CCT control
	3000K						5930 (1000LM/ft)		
	3500K						6050 (1020LM/ft)		
	4000K						6240 (1060LM/ft)		
	5000K						6240 (1060LM/ft)		
	6500K						6240 (1060LM/ft)		
	2700K	>90					4930 (830LM/ft)		
	3000K						5040 (850LM/ft)		
	3500K						5140 (870LM/ft)		
	4000K						5300 (900LM/ft)		
	5000K						5300 (900LM/ft)		
	6500K						5300 (900LM/ft)		
LLS-LH60BDFBS1800(T)	3000K	>80	220VAC- 240VAC	2.7 (0.34A/ft)	102 (12.96W/ft)	107 (13.6W/ft)	4060 (690LM/ft)	2400mm (7.87ft)	Dial switch CCT control
	4300K						4680 (790LM/ft)		
	6500K						4290 (730LM/ft)		
	3000K	>90					3370 (570LM/ft)		
	4300K						3980 (670LM/ft)		
	6500K						3650 (620LM/ft)		
LLS-LH60BDFBS2400(N)	2700K	>80	220VAC- 240VAC	2.7 (0.34A/ft)	102 (12.96W/ft)	107 (13.6W/ft)	7590 (960LM/ft)	2400mm (7.87ft)	Single CCT control
	3000K						7760 (980LM/ft)		
	3500K						7920 (1000LM/ft)		
	4000K						8160 (1030LM/ft)		
	5000K						8160 (1030LM/ft)		
	6500K						8160 (1030LM/ft)		
	2700K	>90					6460 (820LM/ft)		
	3000K						6600 (840LM/ft)		
	3500K						6730 (860LM/ft)		
	4000K						6940 (890LM/ft)		
	5000K						6940 (890LM/ft)		
	6500K						6940 (890LM/ft)		
LLS-LH60BDFBS2400(T)	3000K	>80	220VAC- 240VAC	2.7 (0.34A/ft)	102 (12.96W/ft)	107 (13.6W/ft)	5300 (670LM/ft)	2400mm (7.87ft)	Dial switch CCT control
	4300K						6120 (780LM/ft)		
	6500K						5610 (710LM/ft)		
	3000K	>90					4400 (560LM/ft)		
	4300K						5200 (660LM/ft)		
	6500K						4770 (610LM/ft)		

Note:

1. The above parameters were tested based on 1.2M(3.94') standard products;
2. luminous flux is allowed to have a ±10% error range;
3. The above parameters are typical values.

**[Optical Parameter]**



luminous intensity distribution diagram

Flux out: 2231 lm

Height	Eavg, Emax	Angle: 175.00deg	Diameter
1m	1.354, 1481lx		4580.75cm
2m	0.3384, 370.3lx		9161.50cm
3m	0.1504, 164.6lx		13742.26cm
4m	0.0846, 92.57lx		18323.01cm
5m	0.0541, 59.25lx		22903.76cm
6m	0.0376, 41.14lx		27484.51cm
7m	0.0276, 30.23lx		32065.26cm
8m	0.0212, 23.14lx		36646.01cm
9m	0.0167, 18.29lx		41226.77cm
10m	0.0135, 14.81lx		45807.52cm

Note: The Curves indicate the illuminated area and the average illumination when the luminaire is at different distance.

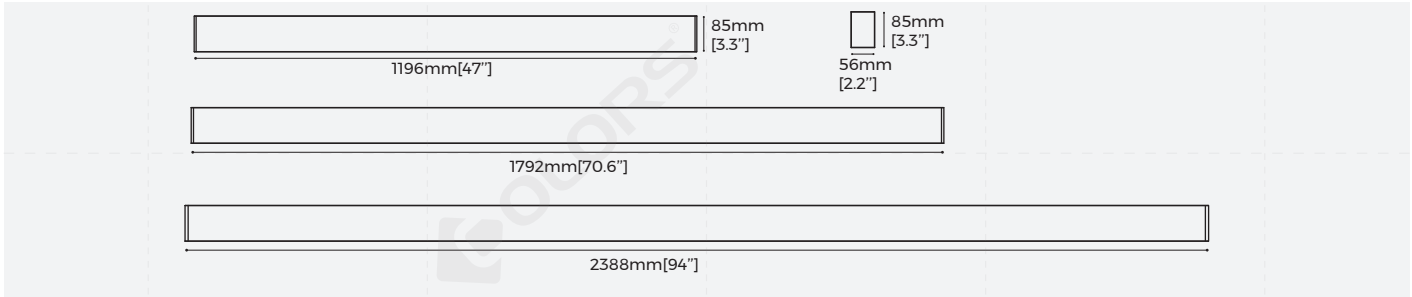
AAI Figure

**[Product UGR]**

ceiling/cavity	0.7	0.7	0.5	0.5	0.3	0.7	0.7	0.5	0.5	0.3	
walls	0.5	0.3	0.5	0.3	0.3	0.5	0.3	0.5	0.3	0.3	
working plane	0.2	0.2	0.2	0.2	0.2	0.2	0.2	0.2	0.2	0.2	
Room dimensions	Viewed crosswise					Viewed endwise					
x = 2H y = 2H	12.1	13.0	12.9	13.8	14.7	9.7	10.6	10.4	11.3	12.3	
3H	12.7	13.5	13.5	14.3	15.3	10.5	11.4	11.4	12.2	13.2	
4H	12.9	13.6	13.7	14.5	15.5	10.9	11.7	11.7	12.5	13.5	
6H	12.9	13.6	13.8	14.5	15.5	11.2	11.9	12.0	12.7	13.8	
8H	12.9	13.6	13.8	14.4	15.5	11.3	11.9	12.1	12.8	13.9	
12H	12.9	13.5	13.8	14.4	15.5	11.3	12.0	12.2	12.8	13.9	
4H	2H	12.0	12.8	12.9	13.6	14.6	10.0	10.8	10.9	11.6	12.6
3H	12.8	13.4	13.7	14.3	15.4	11.1	11.7	11.9	12.6	13.7	
4H	13.1	13.7	14.0	14.6	15.7	11.5	12.1	12.4	13.0	14.1	
6H	13.2	13.7	14.2	14.6	15.8	11.9	12.4	12.8	13.3	14.5	
8H	13.3	13.7	14.2	14.6	15.8	12.1	12.5	13.0	13.5	14.6	
12H	13.3	13.7	14.3	14.7	15.9	12.2	12.6	13.1	13.5	14.7	
8H	4H	13.1	13.5	14.0	14.4	15.6	11.6	12.1	12.6	13.0	14.2
6H	13.3	13.7	14.3	14.6	15.8	12.2	12.5	13.1	13.5	14.7	
8H	13.4	13.8	14.4	14.7	15.9	12.4	12.8	13.4	13.7	14.9	
12H	13.6	13.9	14.6	14.9	16.1	12.7	13.0	13.7	13.9	15.2	
12H	4H	13.0	13.4	13.9	14.3	15.5	11.6	12.0	12.5	12.9	14.1
6H	13.3	13.6	14.3	14.6	15.8	12.2	12.5	13.2	13.5	14.7	
8H	13.5	13.8	14.5	14.7	16.0	12.5	12.8	13.5	13.8	15.0	
Variations with the observer position at spacings:											
S = 1.0H	+ 0.4 / - 0.4					+ 0.4 / - 0.5					
1.5H	+ 0.6 / - 0.7					+ 0.2 / - 0.4					
2.0H	+ 1.6 / - 1.2					+ 0.3 / - 0.5					

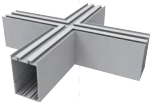
CIE Pub.117, 3995 lm Total Lamp Luminous Flux Correct (8log(F/F0) = 4.8)

## [Product mechanical data]



## [Product Accessories Information]

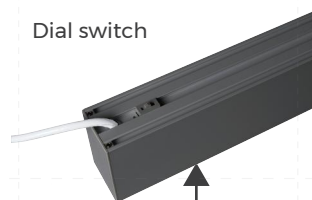
Picture	Section size	Name	Description	Model	Note
		Splicing bar	Size: L110*W15.5*H11.7mm [Inch size: L4.33**W0.61**H0.46"]	EX-41	Interconnection Accessories
		Splicing bar	Size: L135*W51.6*H51.5mm [Inch size: L5.32**W2.03**H2.03"]	EX-45(N)	
	/	Surface mounted buckle	Size: L90.5*W54*H5.9mm (Inch Size: L3.56**W2.16**H0.23")	CL-06	Installation Accessories
		Pendant installation clip	Size: L36.3*W20*H7mm (Inch Size: L1.43**W0.79**H0.28")	CP-16	
	/	Pendant cable 2m/4m	/	PN-D	
	/	Pendant cable 2m/4m (with junction box)	/	PY-D	
	/	Pendant rod	/	PG-I	
	/	L shaped corner	Without lighting source; Size: L200*W200*H85mm (Inch Size: L7.87**W7.87**H3.35")	L90-LS60	Standard interconnected corners
	/	L shaped corner (light from inward)	Without lighting source; Size: L200*W200*H56mm (Inch Size: L7.87**W7.87**H2.2")	L90N-LS60	
	/	L shaped corner (light from outward)	Without lighting source; Size: L200*W200*H56mm (Inch Size: L7.87**W7.87**H2.2")	L90W-LS60	
	/	T shaped corner	Without lighting source; Size: L305*W188*H85mm (Inch Size: L12**W7.4**H3.35")	T90-LS60	

	/	X shaped corner	Without lighting source; Size: L350*W350*H85mm (Inch Size: L13.78"*W13.78"*H3.35")	X90-LS60	Standard interconnected corners
---	---	-----------------	---	----------	---------------------------------

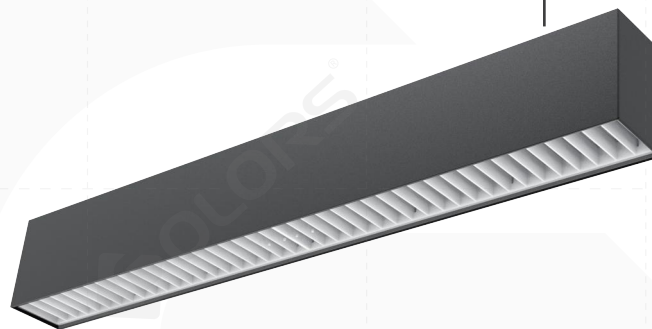
## 【Product Type】

### 【Dial switch CCT control】

- Dimming method: Non/ DALI-2+ PUSH/1-10V optional
- 3000K/4300K/6500K 3-tier CCT adjustable, can achieve general lighting demands

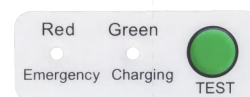


Dial switch



### 【Emergency power model】

- Dimming method: Non/ DALI-2+PUSH/1-10V optional
- Product length is 1.2m, other lengths need to be customized.

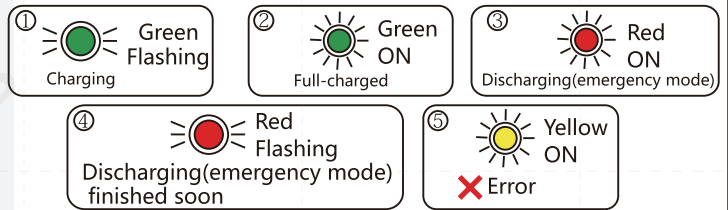


### · Technical parameters:

- Input voltage: 220-240VAC/50-60Hz
- Charging time: 24 hours
- Power(emergency mode): 4W constant power output
- Battery capacity: 7.4V 2500mAh
- Emergency time: ≥3 hours
- Emergency light efficiency: ≥120LM/W

### Indicator light introduction

- ① Green/flashing: Charging
- ② Green/on: Full-charged
- ③ Red/on: Discharging(emergency mode)
- ④ Red/flashing: Discharging(emergency mode) finished soon
- ⑤ Yellow/on: Error

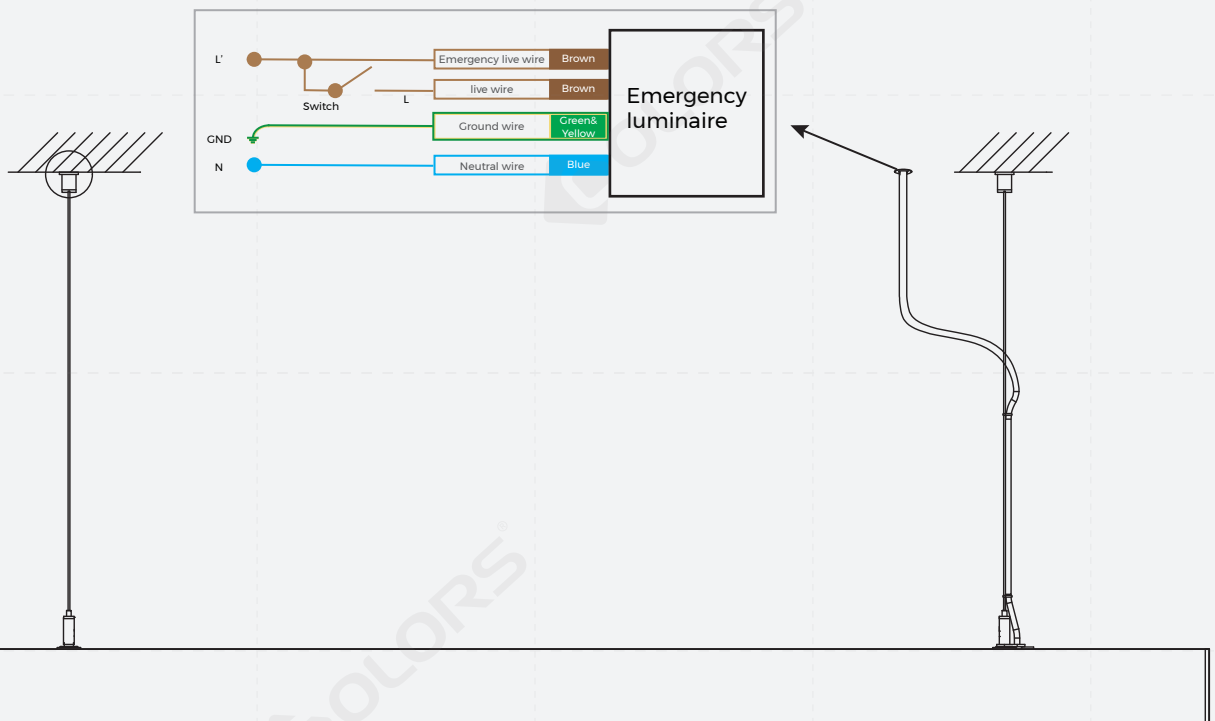


### Test switch introduction

Press the test switch to confirm whether the emergency function is normal



### [Emergency luminaire wiring]



### [Packing]

Model	Demension (mm)	Quantity /box	Quantity /carton	NW (kg)	NW /carton/(kg)	GW (kg)	Carton size (mm)
LLS-LH60BDFBS1200(N)-T51NW8N-DC	1196*56*85 (47"*2.2"*3.3")	1	4	3.12	12.48	22.56	1276*162*220 (50.2"*6.4"*8.66")
LLS-LH60BDFBS1800(N)-T78NW8N-DC	1792*56*85 (70.6"*2.2"*3.3")	1	4	4.68	18.72	33.84	1872*162*220 (73.7"*6.4"*8.66")
LLS-LH60BDFBS2400(N)-T102NW8N-DC	2388*56*85 (94"*2.2"*3.3")	1	4	6.14	24.56	44.84	2468*162*220 (97"*6.4"*8.66")

## **[Attentions]**

1. Non-professionals are prohibited from installing, disassembling and repairing the product.
2. Avoid scratching, distortion and irregular bending of the product during installation; otherwise it may cause irreparable damage to the product.
3. Please use professional cutting tools when cutting.
4. Do not use any acid or alkaline adhesive to fix products.
5. The product is only suitable for indoor dry places, can not be used in outdoor, seaside or wet environment.